



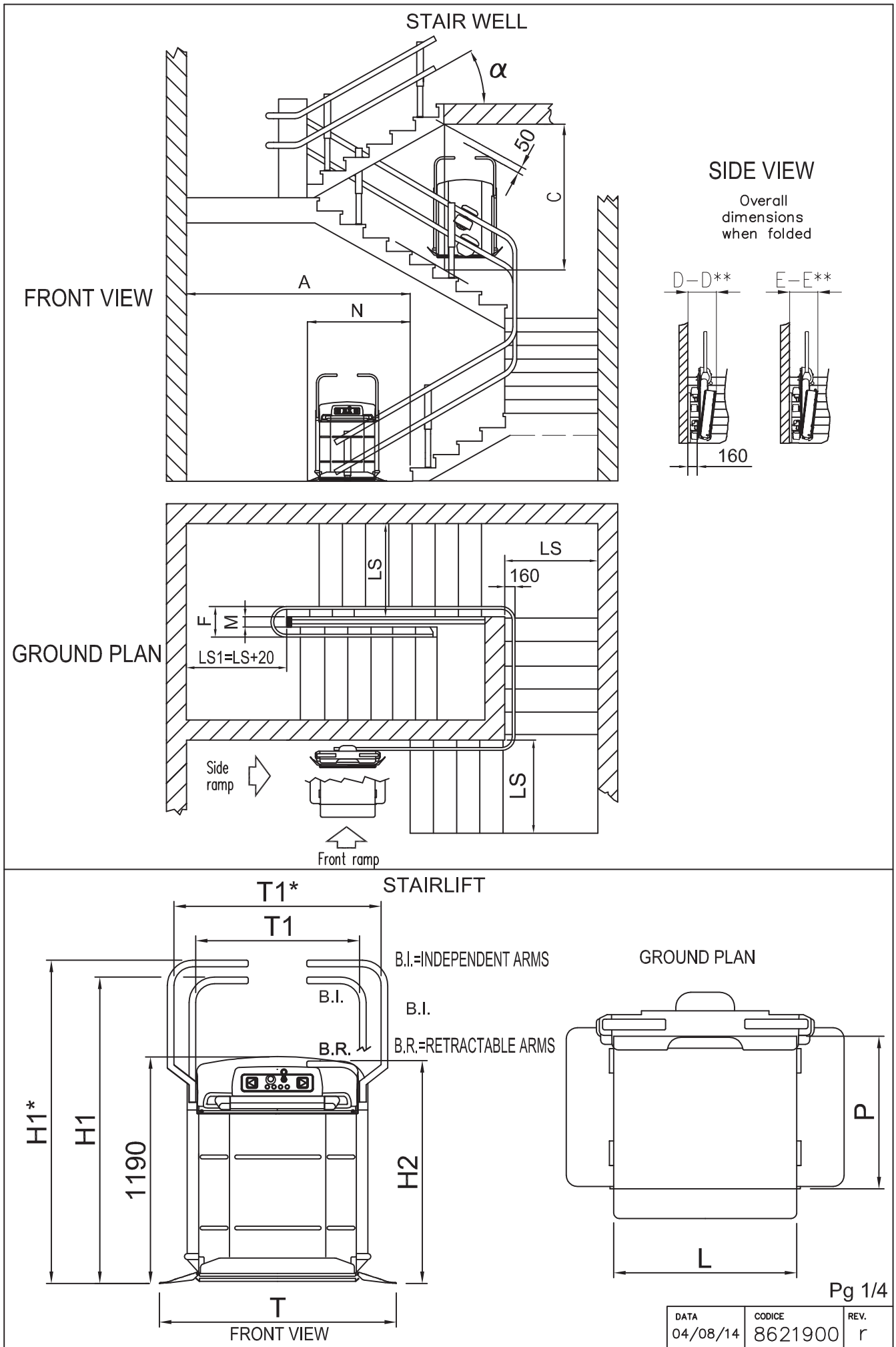
Vimec V65 Technical Data

IMPORTANT WARNING

Please note that the information contained in the following pages is supplied by one of our overseas manufacturer's and does not include Australian requirements for the determination of minimum platform size and additional clearances required under AS1735 (The Australian Lift Code), the Disability (Access to Premises - Buildings) Standards 2010, and BCA. Please ensure you allow for these requirements in addition to the information contained in the following pages, or call us for assistance. Any information contained in this document can change without notice, so before relying on any information contained herein, or other sources, you should obtain written confirmation and a quotation from AussieGlide.

PROVIDING INDEPENDENCE & ACCESS

245 Bruce Crescent, Wallarah NSW 2259
Coastline Contracting Australia Pty Ltd T/A AussieGlide Stairlifts ABN 52 622 579 855



| | | |
|----------|---------|------|
| DATA | CODICE | REV. |
| 04/08/14 | 8621900 | r |

Dimensions "A-LS-LS1-C" are referred to a regular staircase with a slope of 30°. Data are indicative, not binding. The Company reserves the right to undertake all necessary modification without prior notification.

| VARIABLES | V65 B.I. | | | | | | | |
|---------------|------------------------|-----------|-----------|-----------|-----------|-----------|-----------|-----------|
| L Width | 1250 | 1050 | 1050 | 1050 | 830 | 830 | 830 | 830 |
| P Depth | 800 | 900 | 770 | 700 | 770 | 700 | 650 | 600 |
| H1-H1* | 1900* | 1980 | 1850 | 1780 | 1850 | 1780 | 1730 | 1680 |
| T | 1660 | 1460 | 1460 | 1460 | 1240 | 1240 | 1240 | 1240 |
| T1-T1* | 1260* | 1065 | 1065 | 1065 | 865 | 865 | 865 | 865 |
| B | 1390 | 1290 | 1290 | 1290 | 1180 | 1180 | 1180 | 1180 |
| N | 1920 | 1720 | 1720 | 1720 | 1500 | 1500 | 1500 | 1500 |
| F 0<M<70 | $\alpha < 38^\circ$ | 380 | 380 | 380 | 380 | 380 | 380 | 380 |
| | $\alpha \geq 38^\circ$ | 400 | 400 | 400 | 400 | 400 | 400 | 400 |
| F 70<M<150 | $\alpha < 38^\circ$ | 450 | 450 | 450 | 450 | 450 | 450 | 450 |
| | $\alpha \geq 38^\circ$ | 530 | 530 | 530 | 530 | 530 | 530 | 530 |
| F M>150 | $\alpha < 38^\circ$ | 300+M | 300+M | 300+M | 300+M | 300+M | 300+M | 300+M |
| | $\alpha \geq 38^\circ$ | 300+M | 300+M | 300+M | 300+M | 300+M | 300+M | 300+M |
| D-D** | 540/565** | 550/575** | 515/545** | 500/535** | 515/545** | 500/535** | 485/520** | 470/505** |
| E-E** | 540/565** | 550/575** | 475/520** | 470/510** | 475/520** | 470/510** | 465/505** | 450/490** |

Pg 2/4

| | | |
|----------|---------|------|
| DATA | CODICE | REV. |
| 04/08/14 | 8621900 | r |

| VARIABLES | V65 B.I. | | | | | | | |
|--|---------------|---------------|---------------|---------------|--------------|--------------|--------------|--------------|
| | (1250 800) | (1050 900) | (1050 770) | (1050 700) | (830 770) | (830 700) | (830 650) | (830 600) |
| A Side ramp | 2940 | 2740 | 2740 | 2740 | 2520 | 2520 | 2520 | 2520 |
| A Front ramp | 1950 | 1740 | 1740 | 1740 | 1520 | 1520 | 1520 | 1520 |
| LS Straight unit side ramp | 1150 | 1250 | 1120 | 1050 | 1120 | 1050 | 1000 | 950 |
| LS Straight unit front ramp | 1185 | 1285 | 1155 | 1085 | 1155 | 1085 | 1035 | 985 |
| LS Curved unit side ramp/with beveled ramp 65 mm. | 1360/1320 | 1400/1350 | 1300/1250 | 1230/1190 | 1250/1200 | 1180/1130 | ---/1090 | ---/1050 |
| LS Curved unit front ramp/with beveled ramp 65 mm. | 1360/1340 | 1400/1370 | 1300/1270 | 1230/1210 | 1250/1220 | 1180/1150 | ---/1110 | ---/1070 |
| C Vertical arms (rest) | 2590 | 2630 | 2500 | 2430 | 2380 | 2310 | 2260 | 2210 |
| C Horizontal arms (working) | 1890 | 1840 | 1840 | 1840 | 1725 | 1725 | 1725 | 1725 |

Dimensions "A-LS-LS1-C" are referred to a regular staircase with a slope of 30°. Data are indicative, not binding. The Company reserves the right to undertake all necessary modification without prior notification.

| VARIABLES | | V65 B.R. | | | | | | |
|---------------|------------------------|-----------|-----------|-----------|-----------|-----------|-----------|-----------|
| L Width | | 1050 | 1050 | 1050 | 830 | 830 | 830 | 830 |
| P Depth | | 900 | 770 | 700 | 770 | 700 | 650 | 600 |
| H1 | | 1820 | 1690 | 1620 | 1690 | 1620 | 1570 | 1520 |
| H2 | | 1250 | 1120 | 1120 | 1120 | 1120 | 1120 | 1120 |
| T | | 1460 | 1460 | 1460 | 1240 | 1240 | 1240 | 1240 |
| T1 | | 1055 | 1055 | 1055 | 855 | 855 | 855 | 855 |
| B | | 1290 | 1290 | 1290 | 1180 | 1180 | 1180 | 1180 |
| N | | 1720 | 1720 | 1720 | 1500 | 1500 | 1500 | 1500 |
| F 0<M<70 | $\alpha < 38^\circ$ | 380 | 380 | 380 | 380 | 380 | 380 | 380 |
| | $\alpha \geq 38^\circ$ | 400 | 400 | 400 | 400 | 400 | 400 | 400 |
| F 70<M<150 | $\alpha < 38^\circ$ | 450 | 450 | 450 | 450 | 450 | 450 | 450 |
| | $\alpha \geq 38^\circ$ | 530 | 530 | 530 | 530 | 530 | 530 | 530 |
| F M>150 | $\alpha < 38^\circ$ | 300+M | 300+M | 300+M | 300+M | 300+M | 300+M | 300+M |
| | $\alpha \geq 38^\circ$ | 300+M | 300+M | 300+M | 300+M | 300+M | 300+M | 300+M |
| D—D** | | 550/575** | 515/545** | 500/535** | 515/545** | 500/535** | 485/520** | 470/505** |
| E—E** | | 550/575** | 475/520** | 470/510** | 475/520** | 470/510** | 465/505** | 450/490** |

| DATA | CODICE | REV. |
|----------|---------|------|
| 04/08/14 | 8621900 | r |

| VARIABLES | | V65 B.R. | | | | | | |
|--|--|---------------|---------------|---------------|--------------|--------------|--------------|--------------|
| | | (1050 900) | (1050 770) | (1050 700) | (830 770) | (830 700) | (830 650) | (830 600) |
| A Side ramp | | 2740 | 2740 | 2740 | 2520 | 2520 | 2520 | 2520 |
| A Front ramp | | 1740 | 1740 | 1740 | 1520 | 1520 | 1520 | 1520 |
| LS Straight unit side ramp | | 1250 | 1120 | 1050 | 1120 | 1050 | 1000 | 950 |
| LS Straight unit front ramp | | 1285 | 1155 | 1085 | 1155 | 1085 | 1035 | 985 |
| LS Curved unit side ramp/with beveled ramp 65 mm. | | 1400/1350 | 1300/1250 | 1230/1190 | 1250/1200 | 1180/1130 | ---/1090 | ---/1040 |
| LS Curved unit front ramp/with beveled ramp 65 mm. | | 1400/1370 | 1300/1270 | 1230/1210 | 1250/1220 | 1180/1150 | ---/1110 | ---/1070 |
| C Vertical arms (rest) | | 1910 | 1780 | 1780 | 1725 | 1725 | 1725 | 1725 |
| C Horizontal arms (working) | | 1780 | 1780 | 1780 | 1725 | 1725 | 1725 | 1725 |

B.I.=INDEPENDENT ARMS

B.R.=RETRACTABLE ARMS

| | |
|-----|---|
| B | Guide rail dimensions, bottom landing |
| N | Machine dimensions, bottom landing |
| D | Dimensions with fixed front guard |
| D** | Dimensions of seat plus fixed front guard |
| E | Dimensions with front slop |
| E** | Dimensions of seat plus front slop |
| A | Minimum landing area |
| LS | Staircase width |

| VARIABLES | V65 B.I.-B.R. | | | | | | | |
|-------------------------|---------------|---------|---------|---------|---------|---------|---------|---------------------------|
| L Width | 830 | 830 | 830 | 830 | 1050 | 1050 | 1050 | 1250 |
| P Depth | 600 | 650 | 700 | 770 | 700 | 770 | 900 | 800 |
| Rated Load up to 45° | 300 daN | 300 daN | 300 daN | 300 daN | 300 daN | 300 daN | 250 daN | 250 230 daN |
| Rated Load over 45° | 200 daN | 200 daN | 200 daN | 200 daN | 200 daN | 200 daN | 200 daN | 200 daN |

Pg 4/4

| | | |
|------------------|-------------------|-----------|
| DATA 04/08/14 | CODICE 8621900 | REV. r |
|------------------|-------------------|-----------|

TECHNICAL FEATURES

| | | | | |
|--------------|---------------|-------------------|----------|-------------|
| Voltage | Motor Voltage | Auxiliary voltage | Power | Speed |
| 230 [V-mon.] | 24 [V-cc] | 24 [V-cc] | 0.7 [KW] | [8 m/min.] |

Dimensions "A-LS-LS1-C" are referred to a regular staircase with a slope of 30°. Data are indicative, not binding
The Company reserves the right to undertake all necessary modification without prior notification.